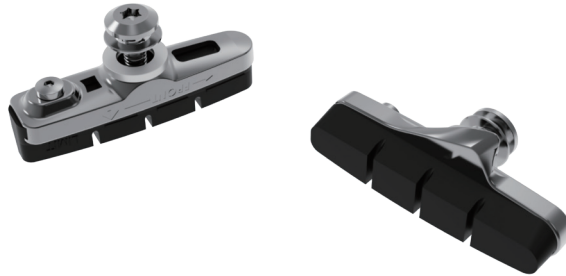


BRAKE SHOE

BRAKE SHOE

RIM BRAKE PADS



Through the experience and technology of PSB, we have developed different brake pads suitable for aluminum rims, ceramic rims, and carbon fiber rims, which have excellent modulation to meet the use in various environments.

ALUMINUM

Aluminum Compound

PSB is the leader of braking technology, now we are proud to announce an innovative rubber composition. This unique composite material provides unprecedented performance to the alloy rim, enhance the ability of staying unaffected by the wet conditions.

CERAMIC

Ceramic Compound

PSB's ceramic rim compound is developed specifically for road use, a situation where huge amount of braking force is required instantaneously, and the characteristics profile follows the performance.

CARBON

Carbon Compound

This is an outstanding compound that gives excellent performance on all carbon rims, giving a market-leading performance in both dry/wet conditions. It is universally considered as the ideal all-round performance product that allows users to brake with assertiveness; Which is also why it's selected by all aftermarket brands.

PR-B012		<p>CARTRIDGE BRAKE SHOES SET ALUMINUM-PAD HOLDER FINISH : SILVER ANODIZED LENGTH 72MM</p>
PR-B021		<p>ONE-PIECE 70MM V-BRAKE SHOES</p>
PR-B022		<p>LENGTH 72MM</p>
PR-B068		<p>LENGTH 60MM</p>
PR-B077		<p>LENGTH 72MM</p>
PR-B078		<p>75MM V-BRAKE SHOES WITH REINFORCED INNER STRUCTURE AND COMPOUND FOR E-BIKE</p>
PR-B811		<p>72MM BRAKE SHOES WITH STEEL POST</p>
PR-B821		<p>70MM BRAKE SHOES WITH STEEL POST</p>

PR-B2111		<p>SHIMANO C-BRAKE SHOES ALUMINIUM CARTRIDGE HOLDER COMPATIBLE WITH DURA-ACE, ULTEGRA & MAJOR ROAD BRAKES</p>
PR-B2121		<p>CARTRIDGE BRAKE SHOES SET ALUMINIUM-PAD HOLDER ANGLE ADJUSTABLE DESIGNED FINISH : CARBON ANODIZED LENGTH 55MM</p>
PR-B2131		<p>CARTRIDGE BRAKE SHOES SET ALUMINIUM-PAD HOLDER ANGLE ADJUSTABLE DESIGNED FINISH : SILVER ANODIZED LENGTH 55MM</p>
PR-B2141		<p>CARTRIDGE BRAKE SHOES SET ALUMINIUM-PAD HOLDER FINISH : SILVER ANODIZED LENGTH 55MM</p>
PR-B2151		<p>CARTRIDGE BRAKE SHOES SET ALUMINIUM-PAD HOLDER FINISH : SILVER ANODIZED COMPATIBLE WITH CAMPAGNOLO RECORD 10*, CHORUS 10* CENTER10 LENGTH 55MM</p>
PR-B2211		<p>TRIPLE-CONTOUR ROAD BRAKE PAD COMPATIBLE WITH ALL MAJOR ROAD BRAKE EXTRA LIGHT HOLDER LENGTH 55MM</p>
PR-B2311		<p>SHIMANO C-BRAKE SHOES ALUMINIUM CARTRIDGE HOLDER COMPATIBLE WITH DURA-ACE, ULTEGRA & MAJOR ROAD BRAKES</p>
PR-B2411		<p>SHIMANO C-BRAKE SHOES ALUMINIUM CARTRIDGE HOLDER COMPATIBLE WITH DURA-ACE, ULTEGRA & MAJOR ROAD BRAKES</p>

PR-B2831		LENGTH 55MM
PR-B2711		CARTRIDGE BRAKE SHOES SET ALUMINUM-PAD HOLDER LENGTH 60MM
PR-B2811		LENGTH 50MM
PR-B2821		LENGTH 50MM
PR-B3121		TRIPLE-CONTOUR ROAD BRAKE PAD COMPATIBLE WITH ALL MAJOR ROAD BRAKE LENGTH 55MM
PR-B3131		SUITABLE FOR FOLDING BIKE LENGTH 55MM
PR-B5011		LENGTH 35MM
PR-B5021		LENGTH 40MM